



GMT MONTHLY MEMBERSHIP PROGRESS REPORT

Results as of: 11/30/2023

Multiple District 27

LOCATION: WISCONSIN

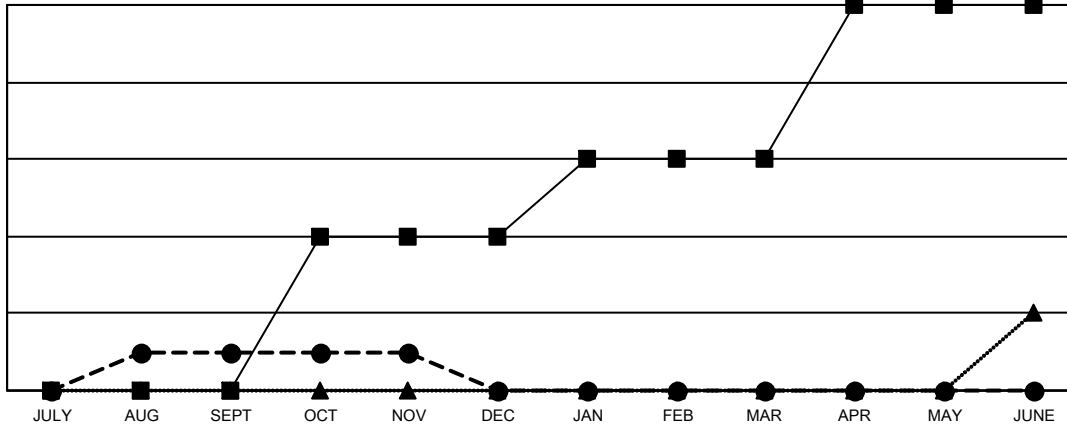
GMT: OPEN

GMT CA 1

Clubs			
RESULTS FOR 2023-2024			
QUARTER	NEW CLUB GOAL	NEW CLUBS	DROPPED CLUBS
JULY/AUG/SEPT	0	1	0
OCT/NOV/DEC	4	0	0
JAN/FEB/MAR	2	0	0
APR/MAY/JUNE	4	0	0

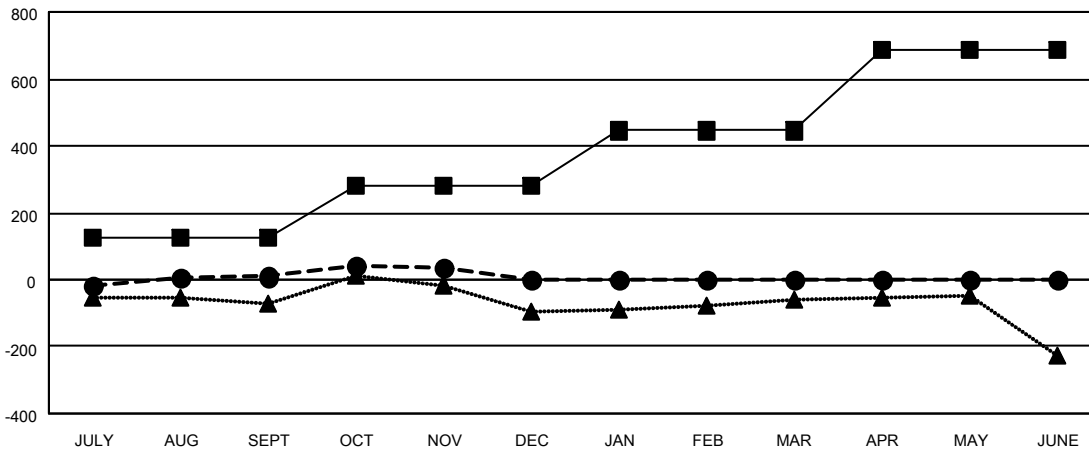
Members			
RESULTS FOR 2023-2024			
QUARTER	MEMBER GROWTH NET GOAL	MEMBER GROWTH ACTUAL	DROPPED MEMBERS ACTUAL (including transfers)
JULY/AUG/SEPT	123	393	356
OCT/NOV/DEC	155	245	205
JAN/FEB/MAR	167	0	0
APR/MAY/JUNE	241	0	0

GOALS AND ACTUAL NEW CLUBS CUMULATIVE



- - CURRENT YEAR GOALS FOR NEW CLUBS
- - CURRENT YEAR ACTUAL NEW CLUBS
- ▲ - LAST YEAR ACTUAL NEW CLUBS

GOALS AND ACTUAL MEMBERS CUMULATIVE



- - MEMBER GROWTH NET GOAL
- - MEMBER GROWTH ACTUAL
- ▲ - LAST YEAR MEMBERSHIP ACTUAL

DROPPED CLUBS: 0	
DROPPED MEMBERS	
DECEASED	104
CLUB CANCELLED	0
OTHER	457
TOTAL	561

230 CLUBS OF 505 ADDED 1 OR MORE NEW MEMBERS

[CLICK HERE FOR CUMULATIVE MEMBERSHIP DATA](#)

GENDER DISTRIBUTION	
MALE	11,832 (70.68%)
FEMALE	4,908 (29.32%)
TOTAL FAMILY UNIT MEMBERS	3,574
FAMILY MEMBERS PAYING HALF DUES	1,815